

0660-33*19**

0660-33*78**

516600

0769-27*328**

0769-22*903**

523200

1	1
2	3
3	4
4	19
5	38
6	42
7	44
8	48
9	64

10	81
11	83
12	88

1

_____ " "

"

"

" "

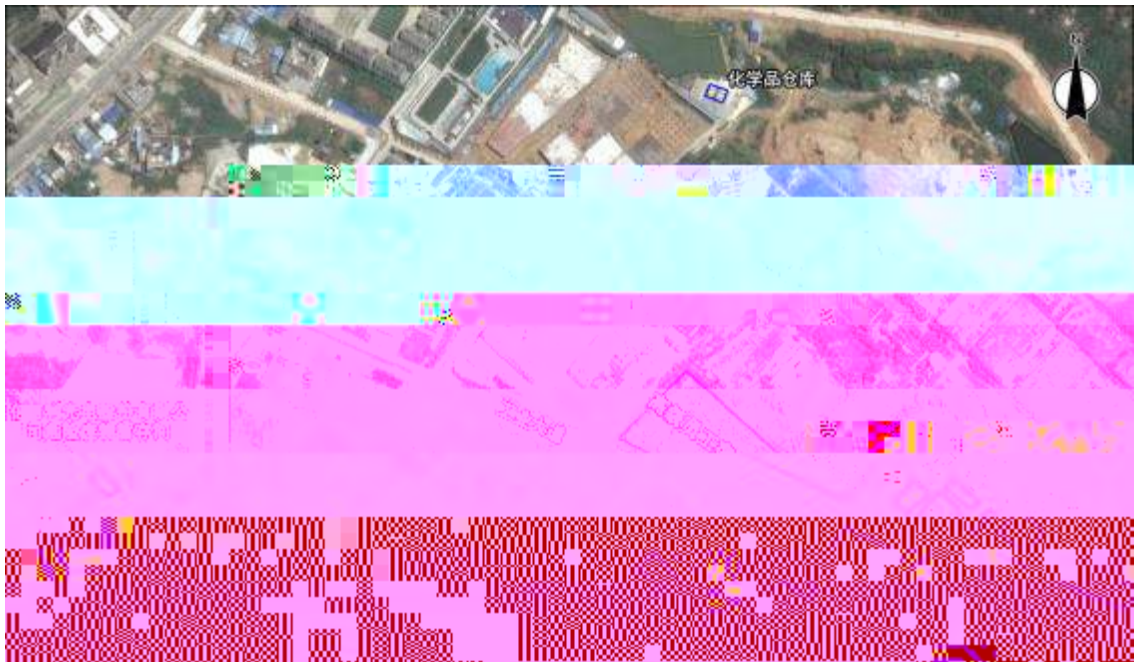
3

3.1

1



3.1-1



3.1-2

2

" "



3.2

1

3.2-1

2

3.2-2 26

				"
				"

3

3.2-3

3.4-2

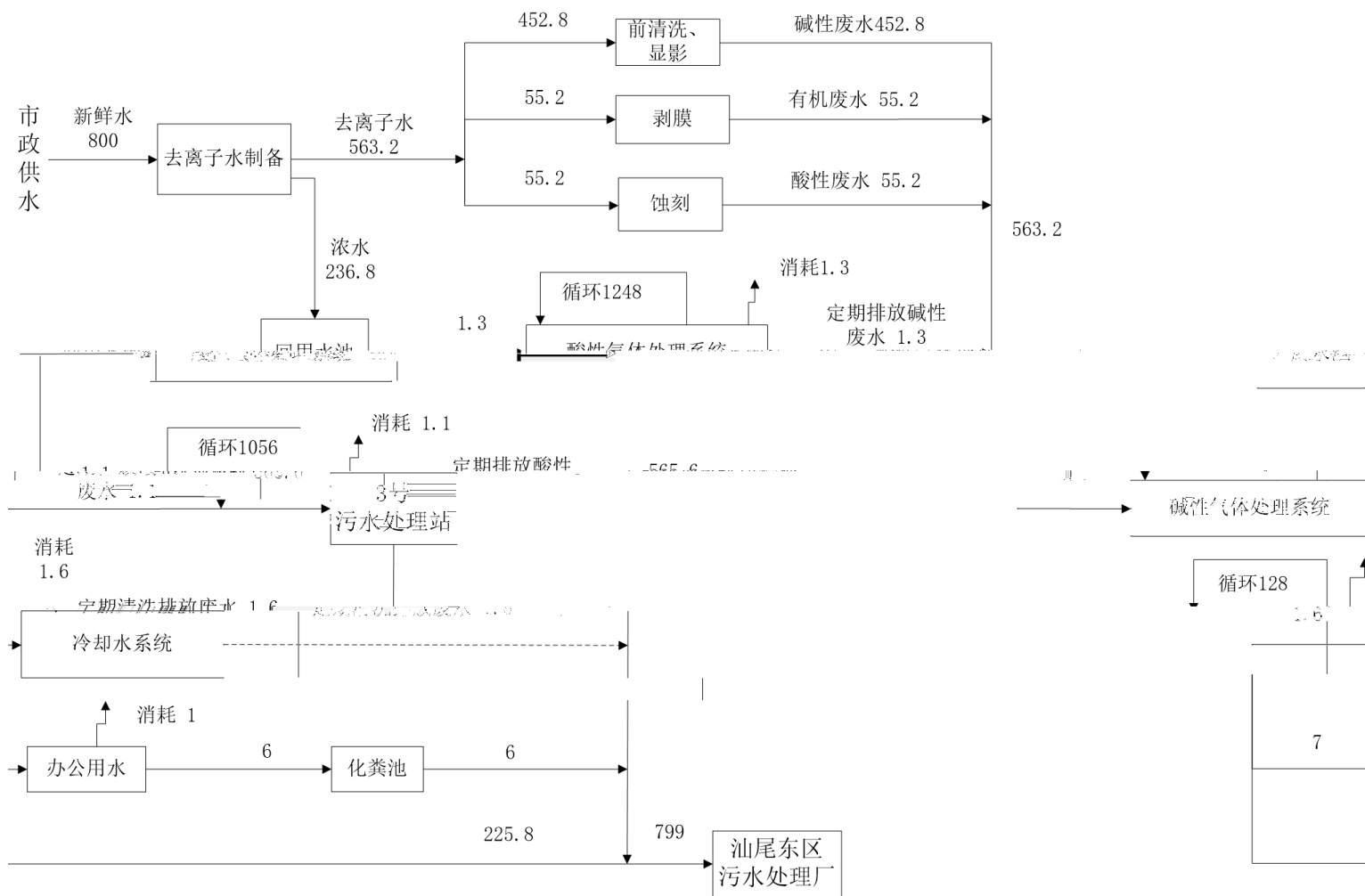
3.5

3.5-1

m³/d

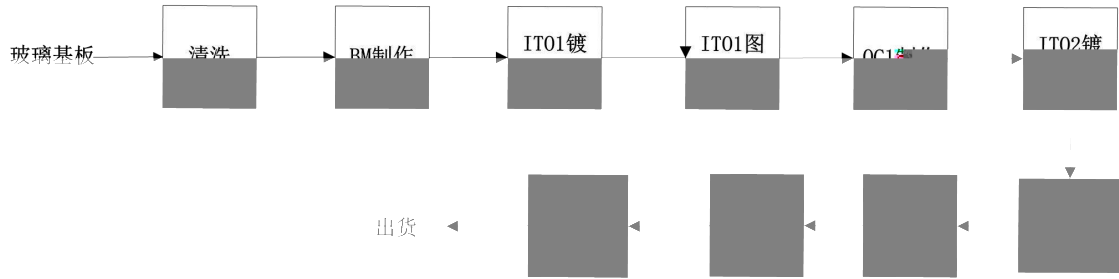
3.5-2

m³/d



3.5-1

3.6



3.6-1

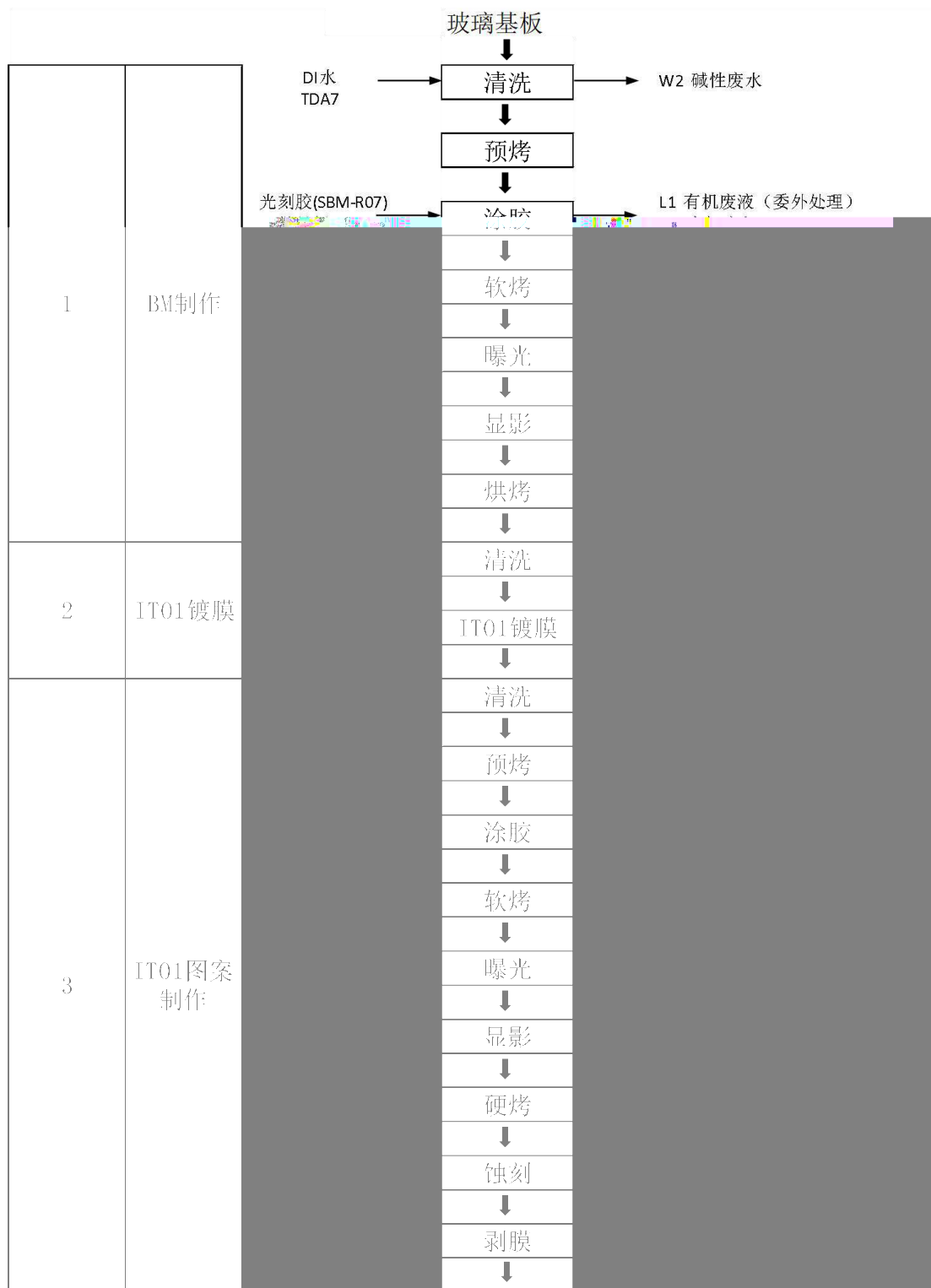
1

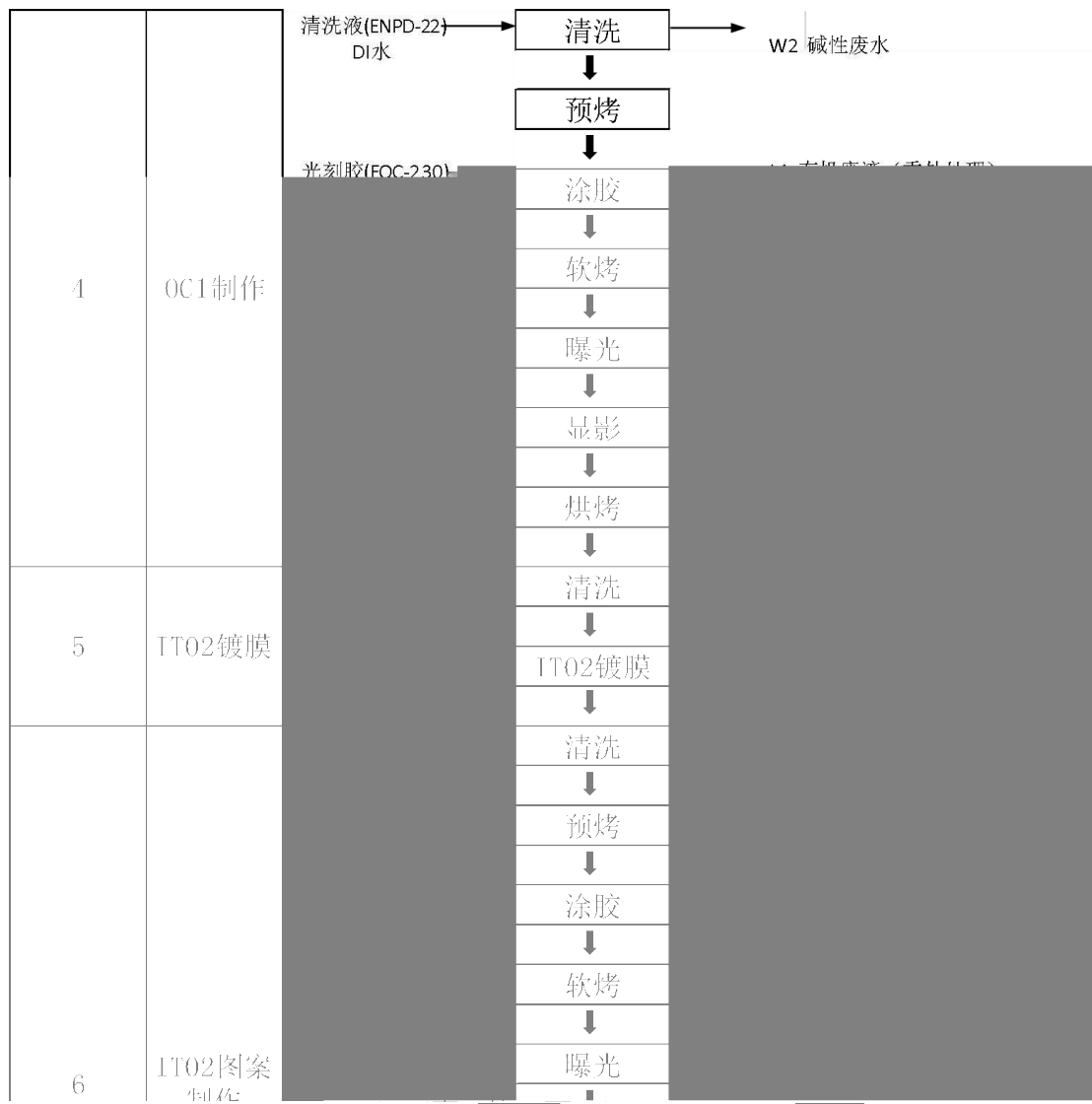
2 ITO

3 BM OC

4 ITO

5





1
2
3
4
5
6
7
8
9
10
11
12
13
14
15
16
17
18
19
20
21
22
23
24
25
26
27
28
29
30
31
32
33
34
35
36
37
38
39
40
41
42
43
44
45
46
47
48
49
50
51
52
53
54
55
56
57
58
59
60
61
62
63
64
65
66
67
68
69
70
71
72
73
74
75
76
77
78
79
80
81
82
83
84
85
86
87
88
89
90
91
92
93
94
95
96
97
98
99
100

3.7-1

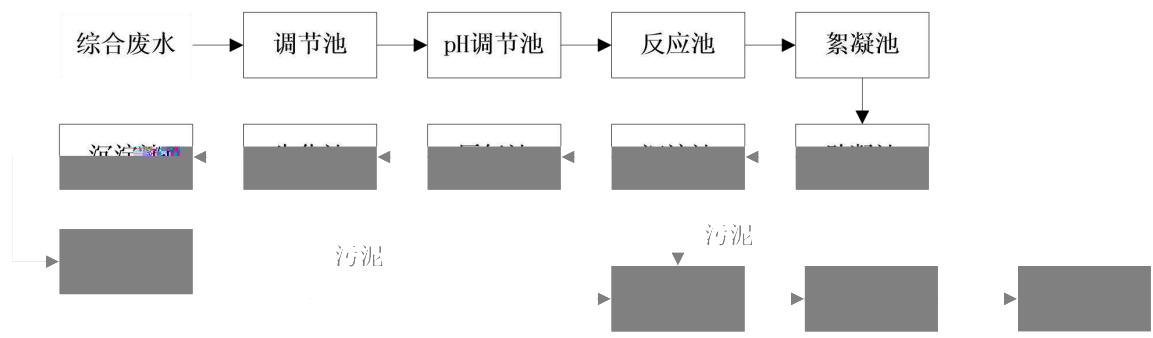
4

4.1 /

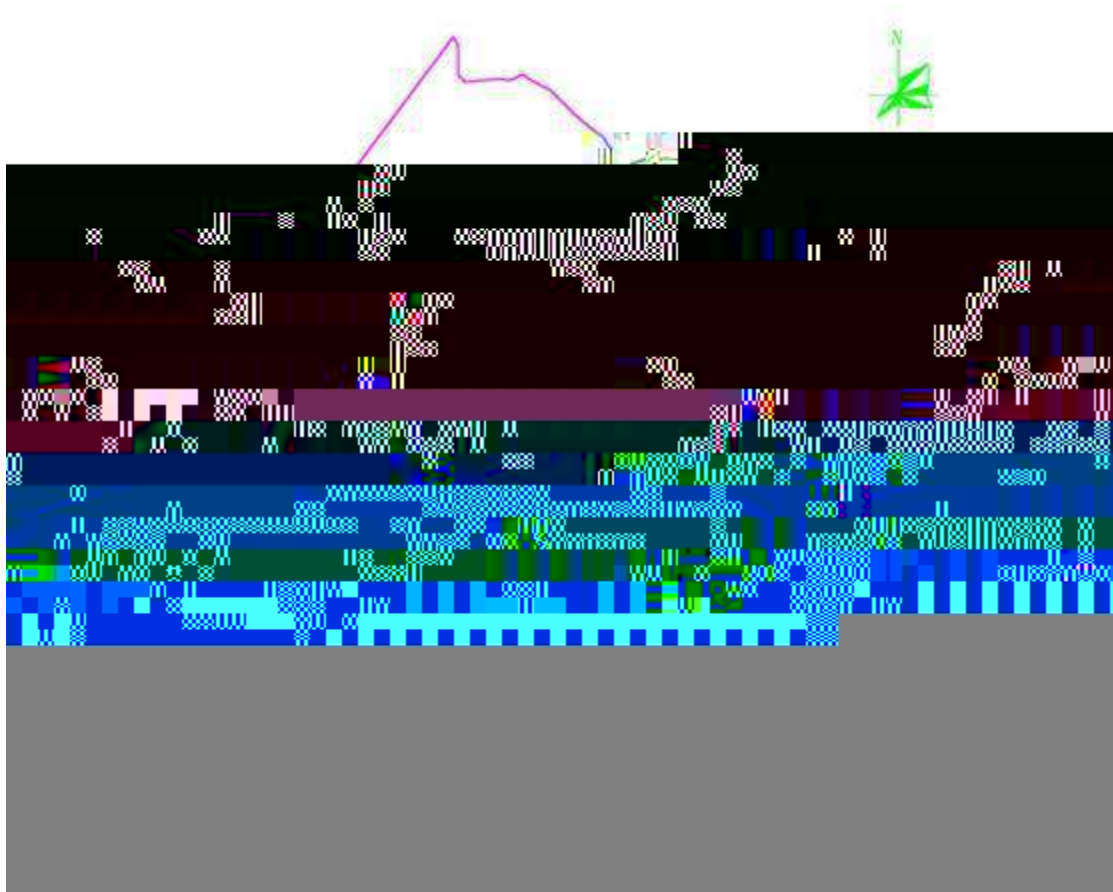
4.1.1

RO

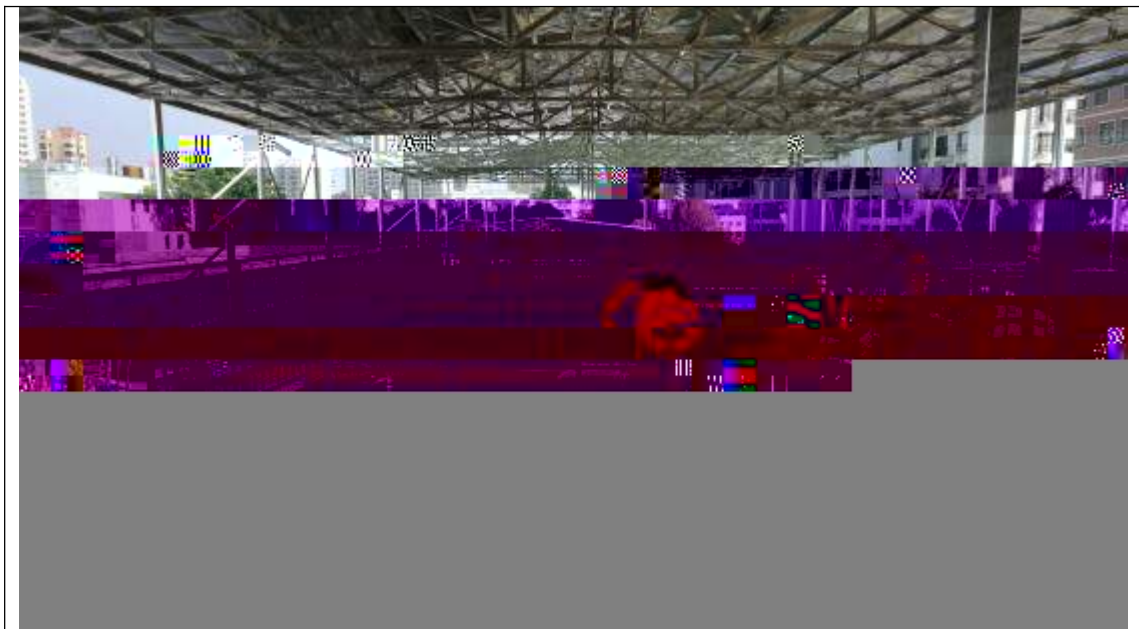
4.1-1

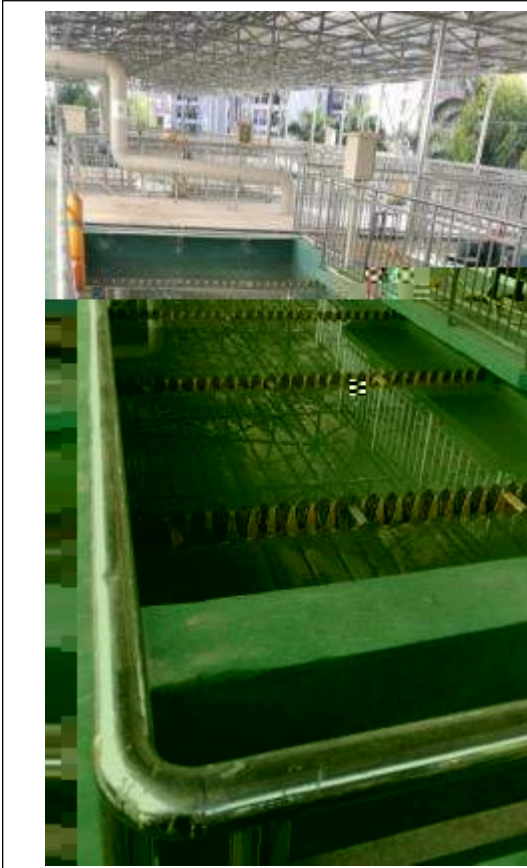


4.1-1 3



4.1-2 26



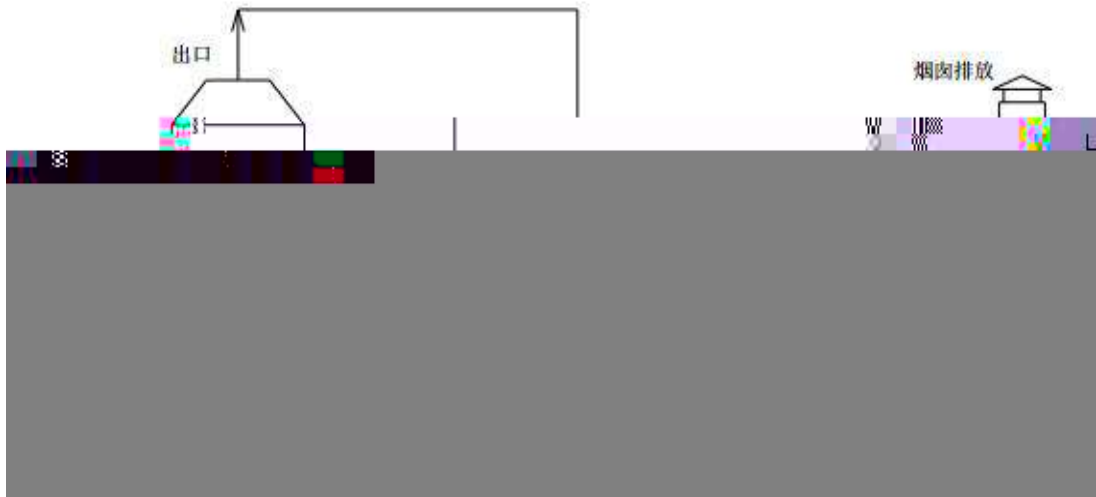


4.1-3 3

4.1.2

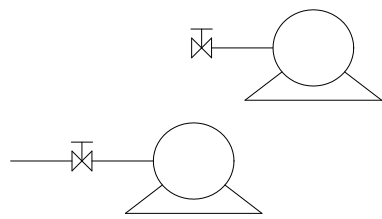
4.1-2

4.1-3



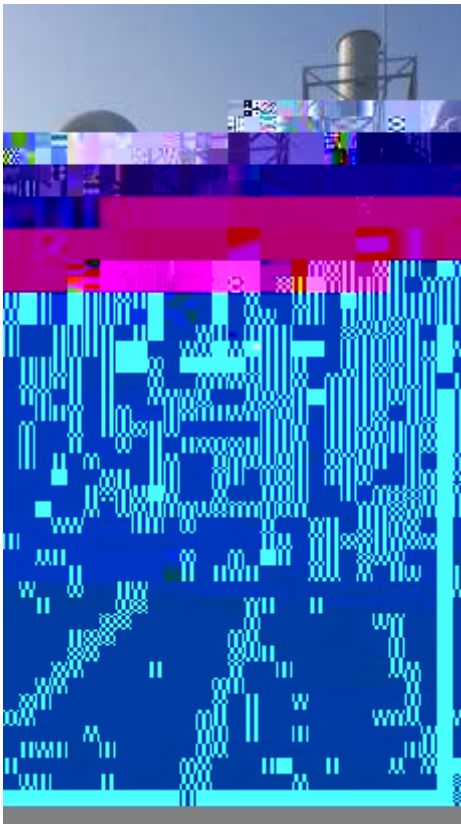
4.1-4

4.1-5





-



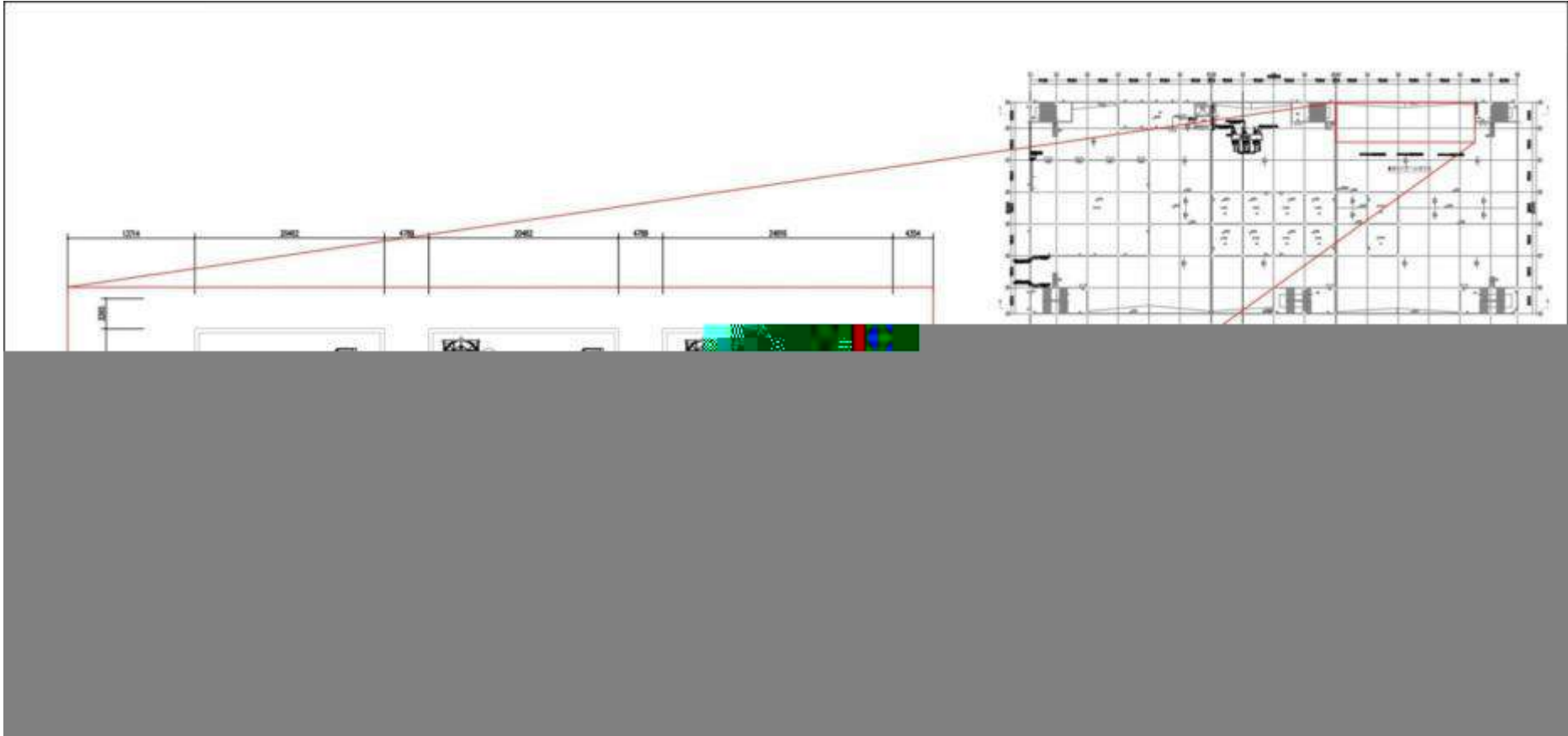
-



-



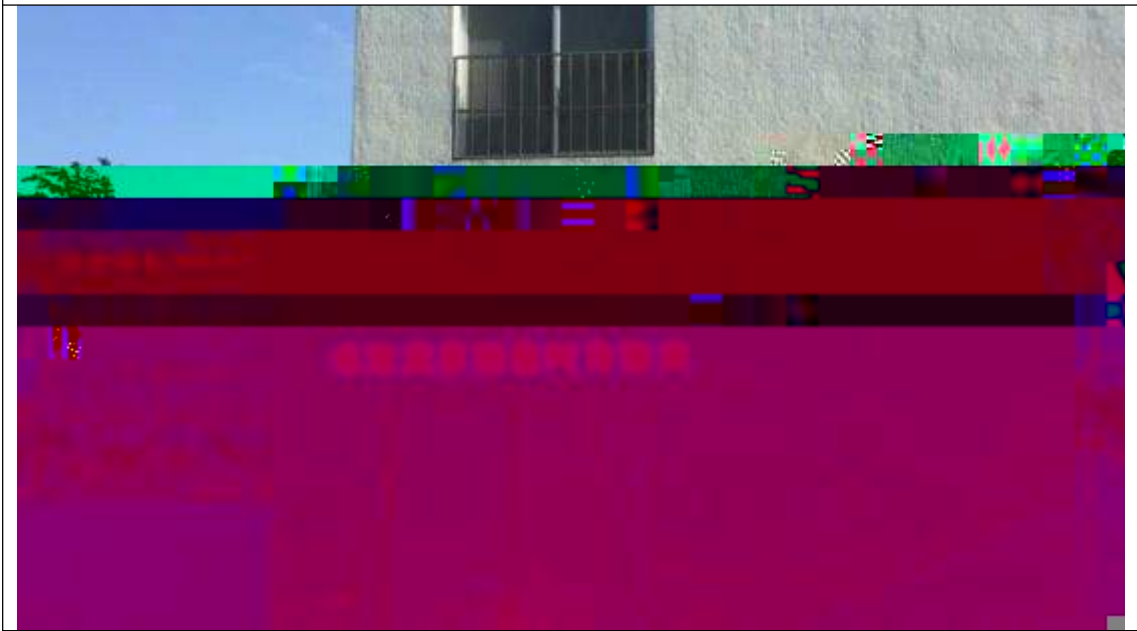
-

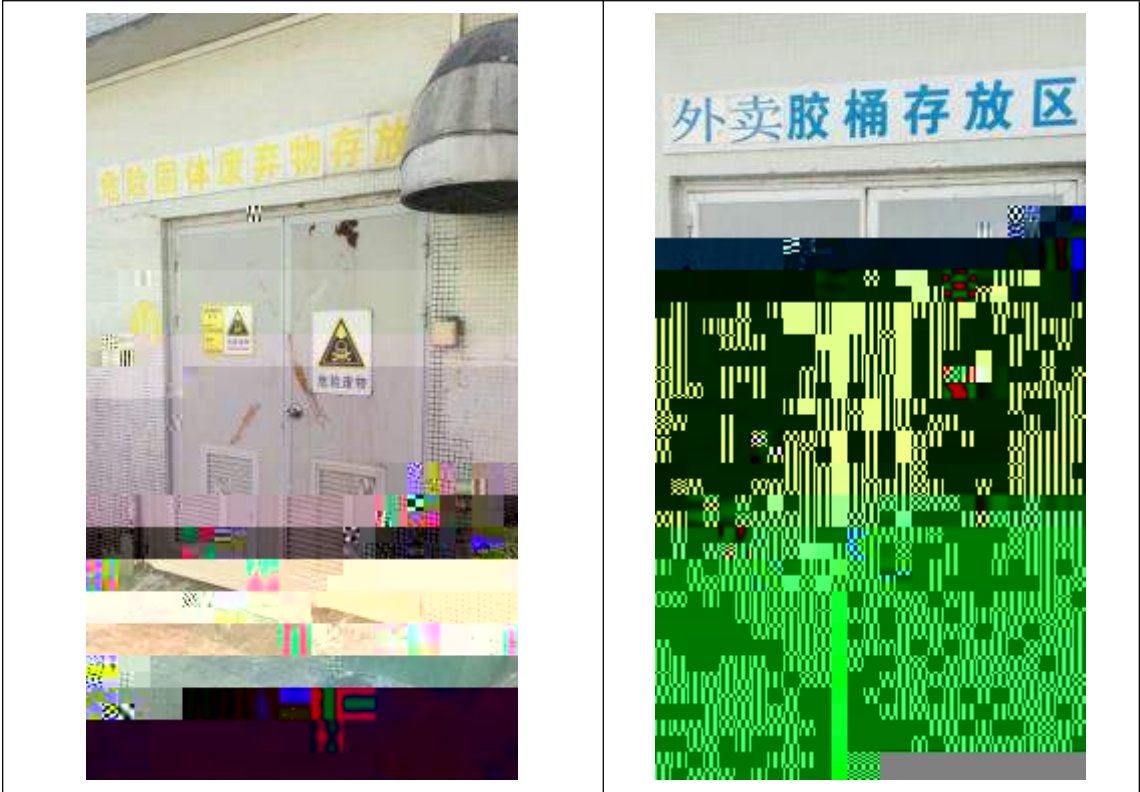


4.1.3

4.1.4

4.1-5



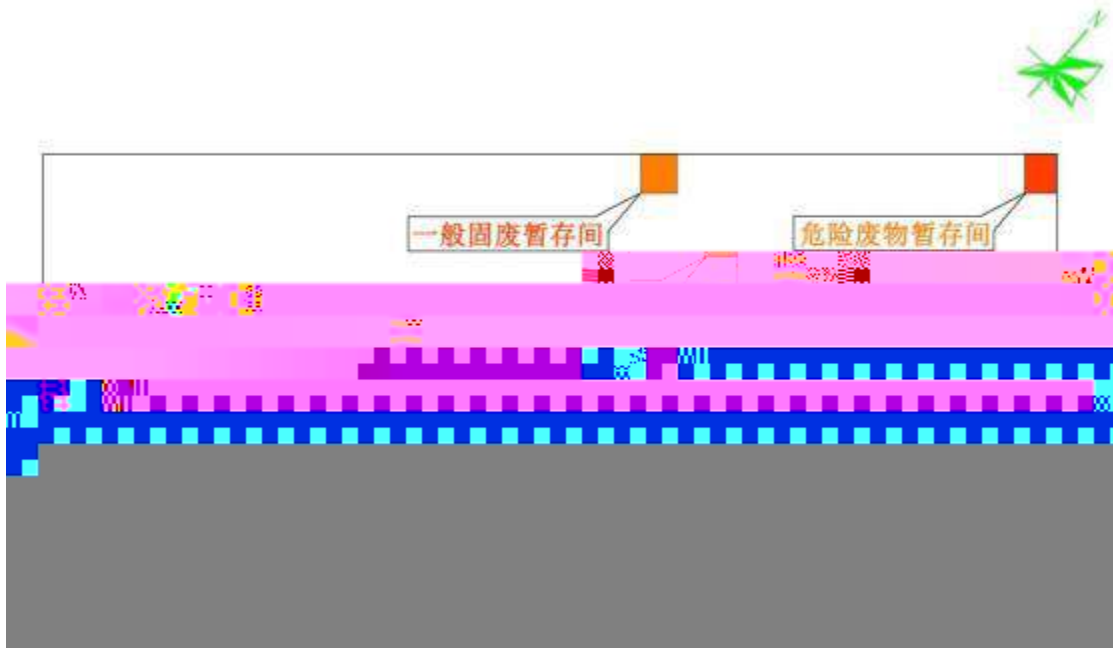


-



-

4.1-10



4.1-11 26



4.1-12

4.2

5

5.1

1

“ ”

2

3

4

5

" "

5.2

" "

×

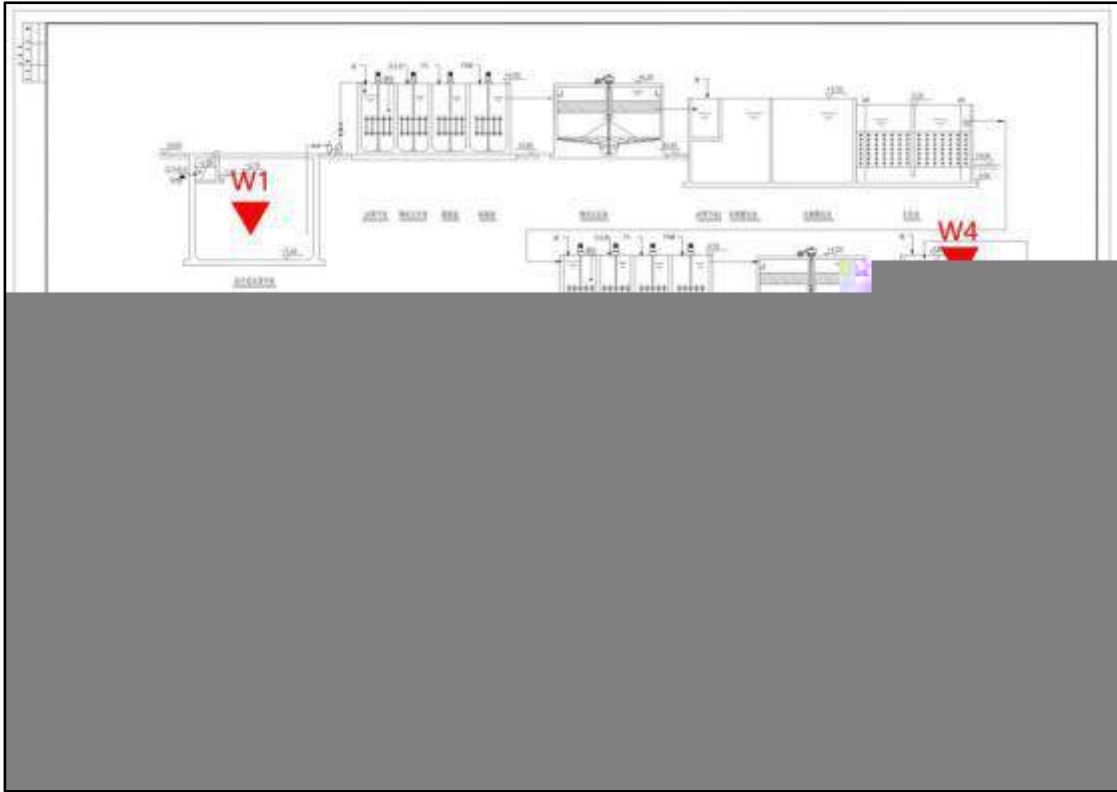
6.2-1

6.3

6.3-1

Leq[dB(A)]

6.4



7.1-1 3

7.1-2

7.1-3

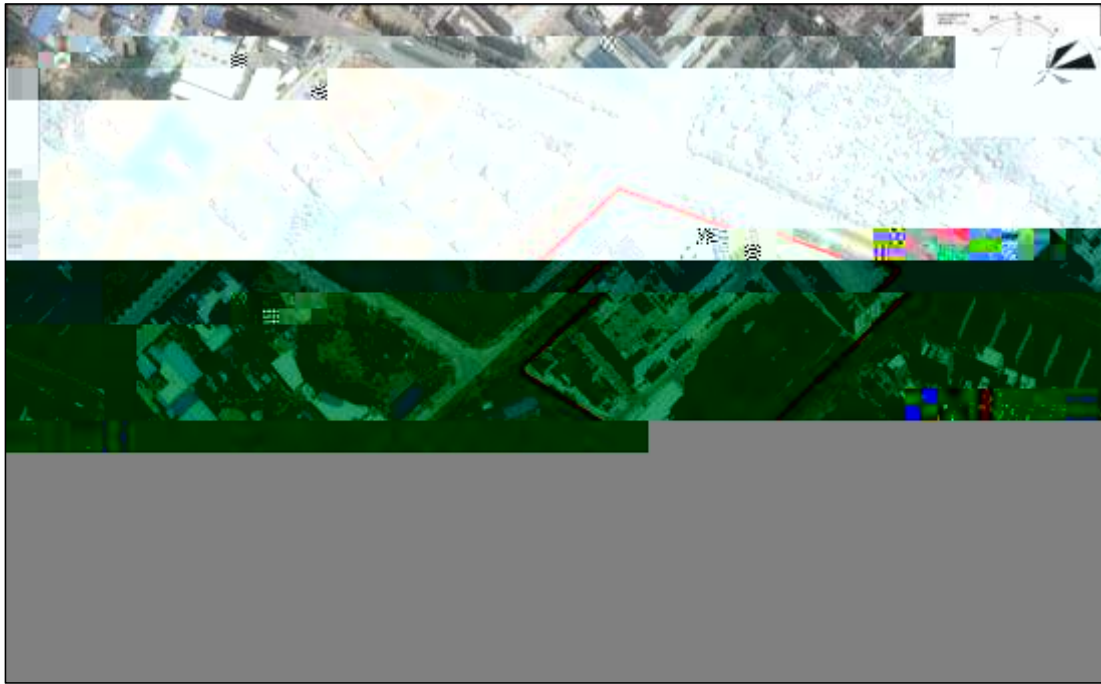


7.1-2

7.2

7.2-1

1



7.2-1

8

8.1

1

8.4-2

8.4-4

mg/m³

9

9.1

9.1-1

"

"

9.2

9.2.1

9.2-1

3

9.2-2

mg/L pH

×

×

9.2-3 W2

mg/L pH

×

×

×

×

x
x
x
x

x
x
x

x
x
x
x

x
x

x
x
x
x

x
x

x
x
x
x

x
x

V5											

L

9.2.2

1

9.2-7

9.2-8

9.2-9

9.2.3

9.2-10 26

dB(A)

9.2.4

"

"

"

"

9.2-11

9.3

1 1

9.3-1 1

2 1

9.3-2 1

dB(A)

a

10

1

11.1-1

" " " "					

11.1-2

12

12.1

12.6

“ ”

